

Precast Show Special Offer: Truck and Crane Package!



2009 Kenworth T800

Unit#	STC 13550-10AL
Engine	Cummins ISX 450
Body Model	22' Wood FLATBED
Transmission	16908LL

Price: \$254,900 excl. taxes

OPTIONS

- Add new pusher axle for \$7,200

Crane Specifications

EFFER 47 0/4S



- 4 (four) hydraulic extensions
- Continuous rotation
- Sequence valves on extensions
- One piece boom sections with full inner weld
- Winch prep kit
- Effer DMU 3000plus overload system
- Radio remote controls
- Oil cooler
- 17' supplementary stabilizers
- 26' main stabilizers with manual swing up
- **New Smith Wood floor body engineered for Precast**
- 13,200 Lift Axle tag
- Full length subframe
- 1 (one) Aluminum tool box
- Straps and winches



Detailed Specifications

Truck Type	TANDEM	Frame	Steel
Engine	Cummins ISX450	Interior	Gray
Engine Brake	Yes	Color	White
Transmission	16908LL	Serial No.	
Suspension	Air	Wheel Base	259"
FA Capacity	20,000 lbs.	Turbo	Yes
RA Capacity	46,000 lbs.	A/C	Yes
Front Wheels	Aluminum	Power Steering	Yes
Rear Wheels	Aluminum	Tank Capacity	100 gallon
Brakes	Air	ECM Mileage	New
Tire Size	425X22.5		

Additional Equipment

- Hi Lift Tag Axle
- Power Divider
- Dual Tanks
- Data Star Dash Display
- Rear Axle has 54" Spread
- Turbo
- Wheel Lock
- Cruise Control

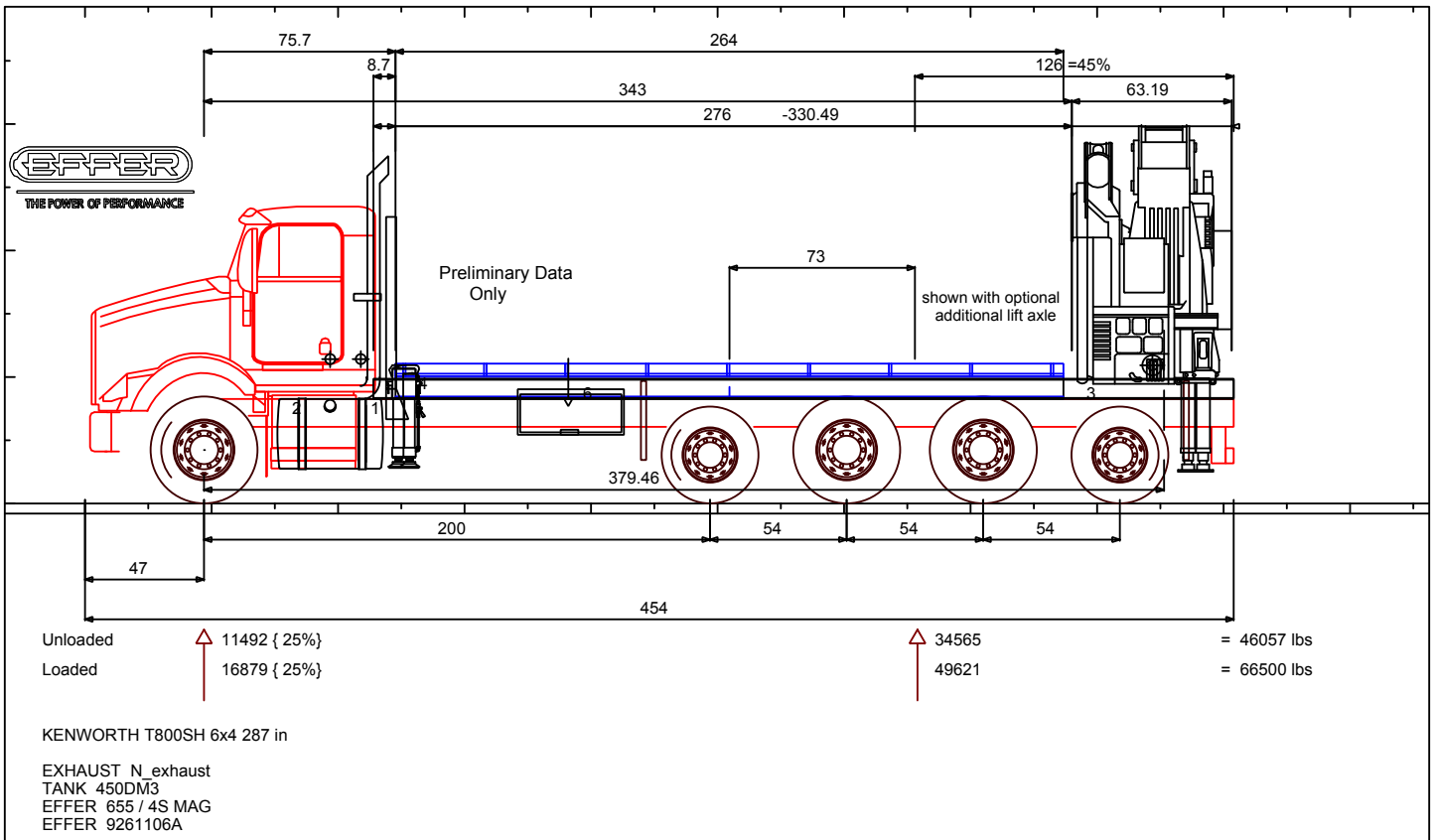
PRICING IS FOB CURRENT LOCATION

NOTE: CHASSIS IS SUBJECT TO PRIOR SALE—ONLY (2) Available at this price!

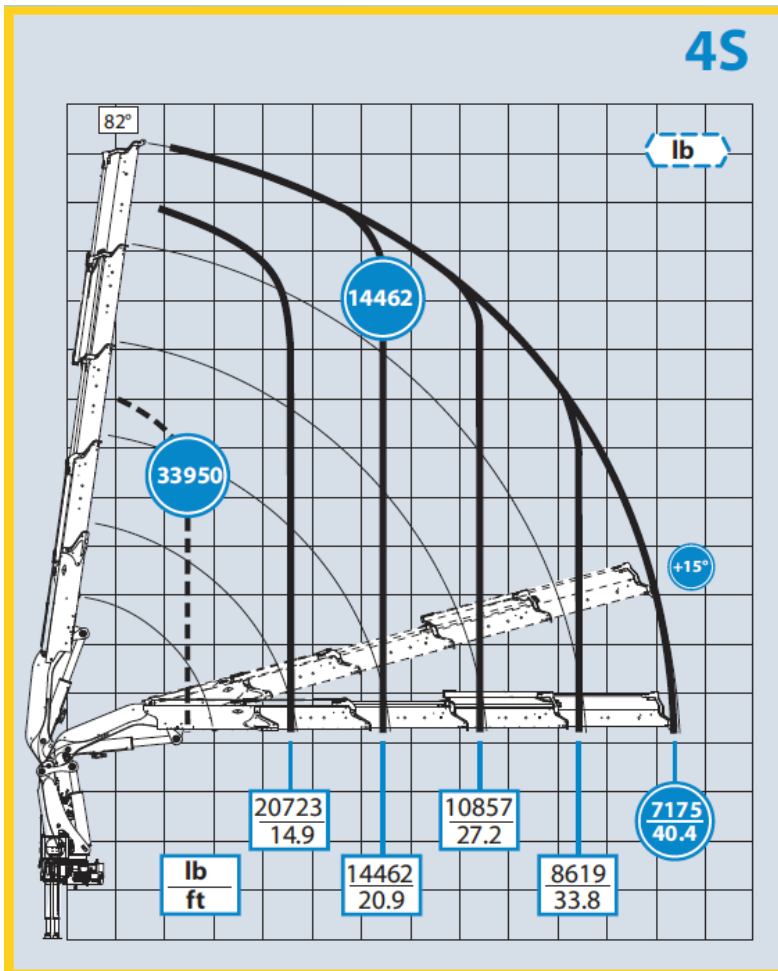


800-342-4210
www.smithtruckcranes.com

Kenworth T800 with Rear-Mount EFFER 470 / 4S



EFFER 470 / 4S Load Chart



The Power of Innovation...

Effer has always led the way in crane innovation and design, and today, Effer features a range of over 40 models of truck cranes, available in many hundreds of variations, featuring lifting capacities from two to two hundred ton/meter, and with as many as five different boom configurations.

Effer cranes also have the best pick to weight ratio in the industry, and the strongest jibs in the industry, allowing you to precisely place the heaviest loads.

Our lightweight cranes also allow the entire truck-crane package to be optimized, resulting in the ability to carry heavier loads with fewer permitting headaches.

With so many models to choose from, and with Effer's ability to optimize a truck-crane package to take the heaviest loads the longest distance, it's no wonder that Effer cranes excel in the Precast and concrete industries.



800-342-4210
www.smithtruckcranes.com