

# Precast Show Special Offer: Truck and Crane Package!



## 2009 Kenworth T800

Unit#	STC 13550-10AL
Engine	Cummins ISX 450
Body Model	22' Wood FLATBED
Transmission	16908LL

**Price: \$299,900 excl. taxes**

### OPTIONS

- Add new pusher axle for \$7,200

### Crane Specifications

## EFFER 850/4S



- 4 (four) hydraulic extensions
- Continuous rotation
- Sequence valves on extensions
- One piece boom sections with full inner weld
- Winch prep kit
- Effer DMU 3000plus overload system
- Radio remote controls
- Oil cooler
- 17' supplementary stabilizers
- 26' main stabilizers with manual swing up
- 2 (two) rear stabilizer support legs
- **New Smith Wood floor body engineered for Precast**
- 13,200 Lift Axle tag
- Full length subframe
- 1 (one) Aluminum tool box
- Straps and winches



### Detailed Specifications

<b>Truck Type</b>	TANDEM	<b>Frame</b>	Steel
<b>Engine</b>	Cummins ISX450	<b>Interior</b>	Gray
<b>Engine Brake</b>	Yes	<b>Color</b>	White
<b>Transmission</b>	16908LL	<b>Serial No.</b>	
<b>Suspension</b>	Air	<b>Wheel Base</b>	259"
<b>FA Capacity</b>	20,000 lbs.	<b>Turbo</b>	Yes
<b>RA Capacity</b>	46,000 lbs.	<b>A/C</b>	Yes
<b>Front Wheels</b>	Aluminum	<b>Power Steering</b>	Yes
<b>Rear Wheels</b>	Aluminum	<b>Tank Capacity</b>	100 gallon
<b>Brakes</b>	Air	<b>ECM Mileage</b>	New
<b>Tire Size</b>	425X22.5		

### Additional Equipment

- Hi Lift Tag Axle
- Power Divider
- Dual Tanks
- Data Star Dash Display
- Rear Axle has 54" Spread
- Turbo
- Wheel Lock
- Cruise Control

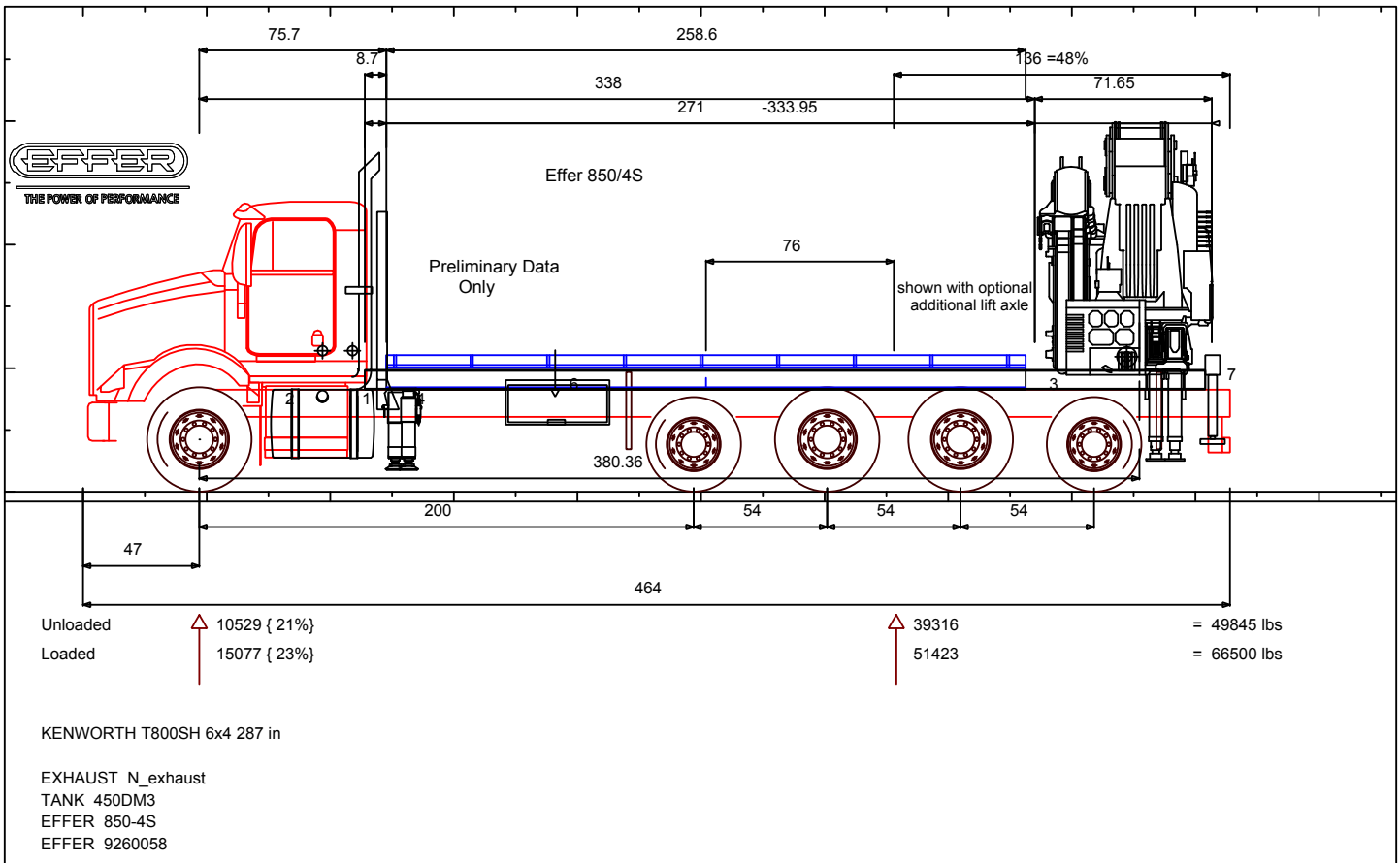
**PRICING IS FOB CURRENT LOCATION**

**NOTE: CHASSIS IS SUBJECT TO PRIOR SALE—ONLY (2) Available at this price!**

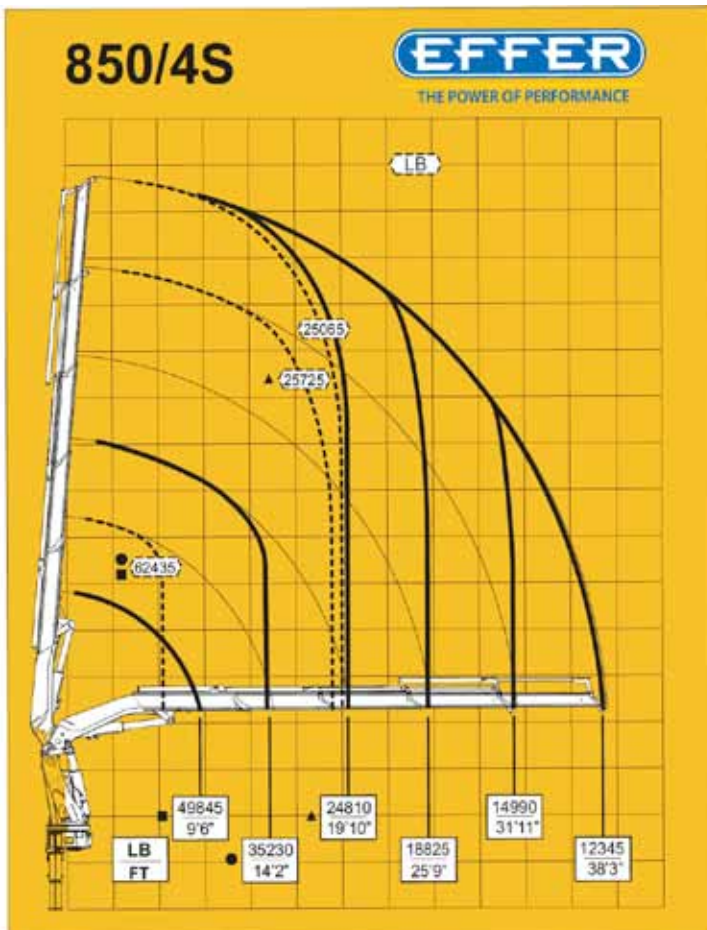


**800-342-4210**  
[www.smithtruckcranes.com](http://www.smithtruckcranes.com)

# Kenworth T800 with Rear-Mount EFFER 850 / 4S



## EFFER 850 / 4S Load Chart



### The Power of Innovation...

Effer has always led the way in crane innovation and design, and today, Effer features a range of over 40 models of truck cranes, available in many hundreds of variations, featuring lifting capacities from two to two hundred ton/meter, and with as many as five different boom configurations.

Effer cranes also have the best pick to weight ratio in the industry, and the strongest jibs in the industry, allowing you to precisely place the heaviest loads.

Our lightweight cranes also allow the entire truck-crane package to be optimized, resulting in the ability to carry heavier loads with fewer permitting headaches.

With so many models to choose from, and with Effer's ability to optimize a truck-crane package to take the heaviest loads the longest distance, it's no wonder that Effer cranes excel in the Precast and concrete industries.



**800-342-4210**  
[www.smithtruckcranes.com](http://www.smithtruckcranes.com)