



series 110 & PC

TROLLEY BOOMS

features

- **Single elevate cylinder design reduces weight and provides increased load clearance**
- **Proven pistol grip radio remote controls as standard**
- **Optional USTC SHOCKGUARD pneumatic control system available for dual control reliability**
- **Box-type boom constructed of high strength steel for increased strength to weight ratio**
- **Continuous boom rotation**
- **Low pressure, open centered hydraulic valves increase reliability and reduce hydraulic maintenance**
- **Flow divider allows the JIFFY-LIFT™ and SIDE-O-MATIC™ to perform several functions simultaneously and efficiently**
- **Pilot-operated load holding valves on all cylinders**
- **Hydraulic outrigger options for increased stability**
- **Designed for truck or trailer installation**
- **Wide variety of factory approved forks and lifting devices available**
- **Optional bearing risers provide increased load clearance under boom**



product guide

series 110 & PC

TROLLEY BOOMS

BOOM

PC-20 C – 26' 1" overall length. 22' with hook out and 55" with hook in. Boom extension radius of 23' 11".

110-26 E – 17' 2" overall retracted length. 25' 3" with hook out, and 14" with hook in. Boom extension radius of 26'.

110-35 E – 22' 3" overall retracted length. 34' 2" with hook out, and 14" with hook in. Boom extension radius of 35'.

HOIST

The lift cable arrangement resembles a block and tackle system operating in reverse. A lift cylinder pulls on the multiple sheave pack that carries the lift cable. The weaving design used throughout the boom maintains a constant hook height regardless of the amount of boom extension.

SWING SYSTEM

360° continuous rotation, equipped with a worm-type gear swing reducer driven by a roller vane-type hydraulic motor. Machines are calibrated to 1 rpm at max engine rpm.

OUTRIGGERS

Outriggers – Optional A-Frame or Out/Down hydraulic outriggers for increased stability.

MOUNTING

Trailer or Truck Mounted – Trailer mounted unloaders utilize our "Classic" Pedestal/Base, and require only 24" (609 mm) of above deck load space. This "Classic" pedestal sits on top of the deck, and bolts to the trailers frame rails.

MECHANISMS

Trolley Systems – PC series fixed length boom offer smooth and fast trolley operation. Straight trolley boom design allows easy operation of all functions.

The **110-26 E & 110-35 E** three-section telescoping trolley booms are ideal for unloading with hook travel to within 14 inches of the pedestal without elevation.

CONTROL SYSTEM

A radio remote control system is standard. To promote optimum "Uptime" a dual control system can be achieved with the addition of the optional USTC SHOCKGUARD control system.

Unloader Safety Devices:

The hydraulic system incorporates such features as integral load holding valves for each cylinder, and system relief valving as standard.

The optional patented USTC SHOCKGUARD Pneumatic Remote Control System, allows the operator to follow the load, while

providing a measure of protection against electrical hazards. Troubleshooting and field service are simplified due to the elemental straight-forward design of the SHOCKGUARD® system.

ELECTRICAL SYSTEMS

Engine – Trailer mounted units can be self-powered or PTO powered, with a wetline kit. An 18 horsepower auxiliary gas engine is an option to PTO operation. All service parts are above the deck where they are easily accessed.

GENERAL

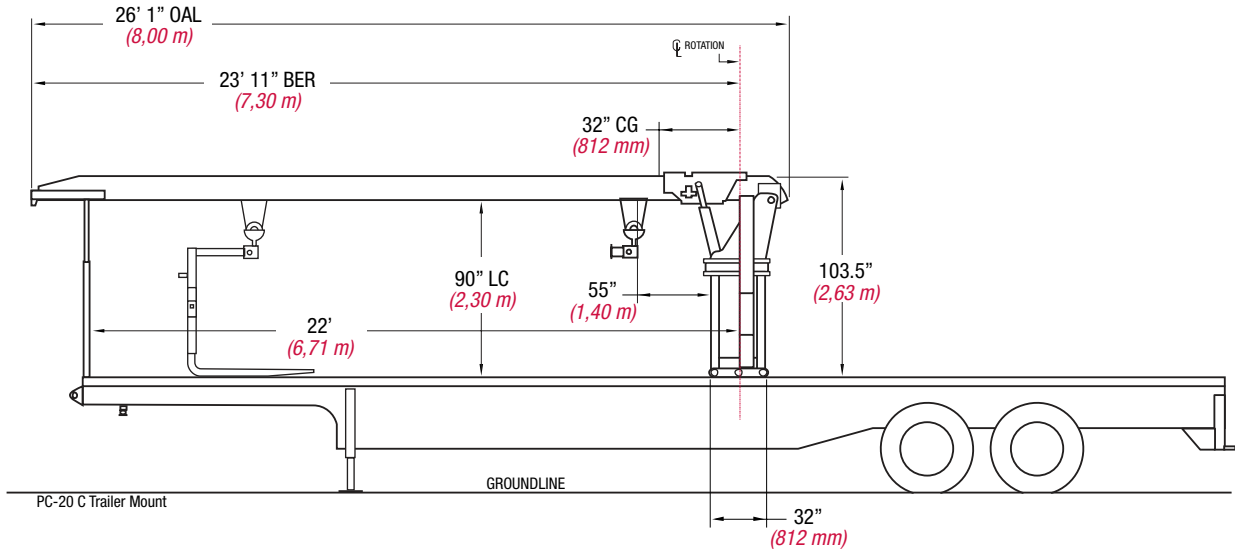
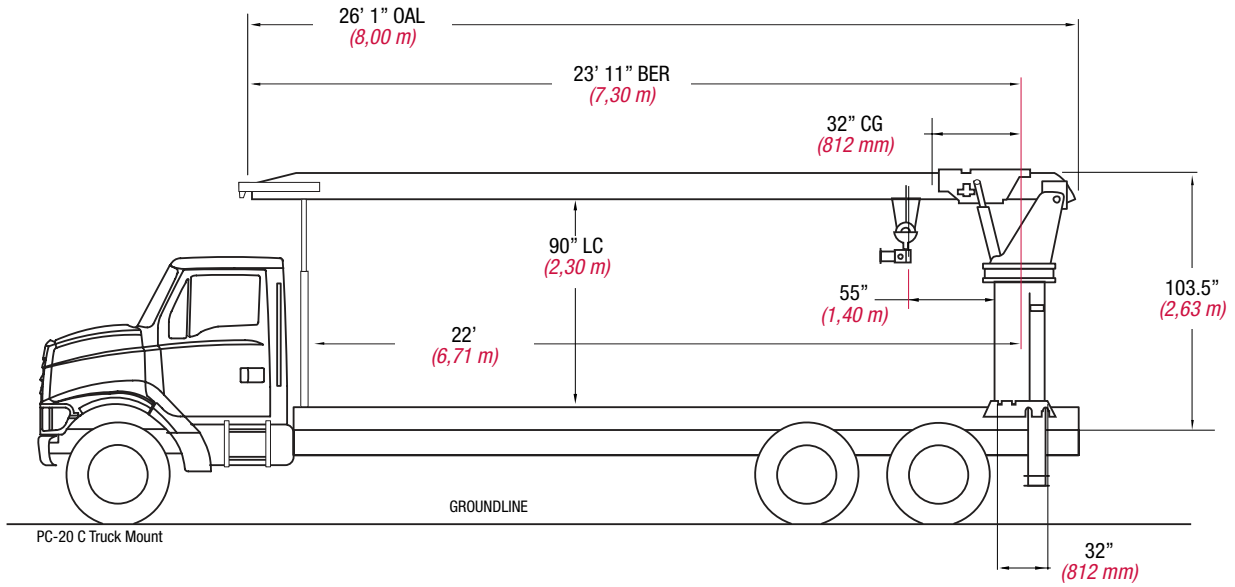
Service Network – Throughout North America our customers are supported by our extensive distributor sales and service network.

Options – Available options include a radio remote and a wide variety of hooks, pipe handling forks, highway barrier clamps, risers, power packs, anti-two blocking devices, auxiliary stabilizers, and more.

Warranty – 12 month warranty covers parts and labor resulting from defects in material workmanship.

* In order to ensure continuous improvement, specifications may change without notice.

model **PC-20 C**



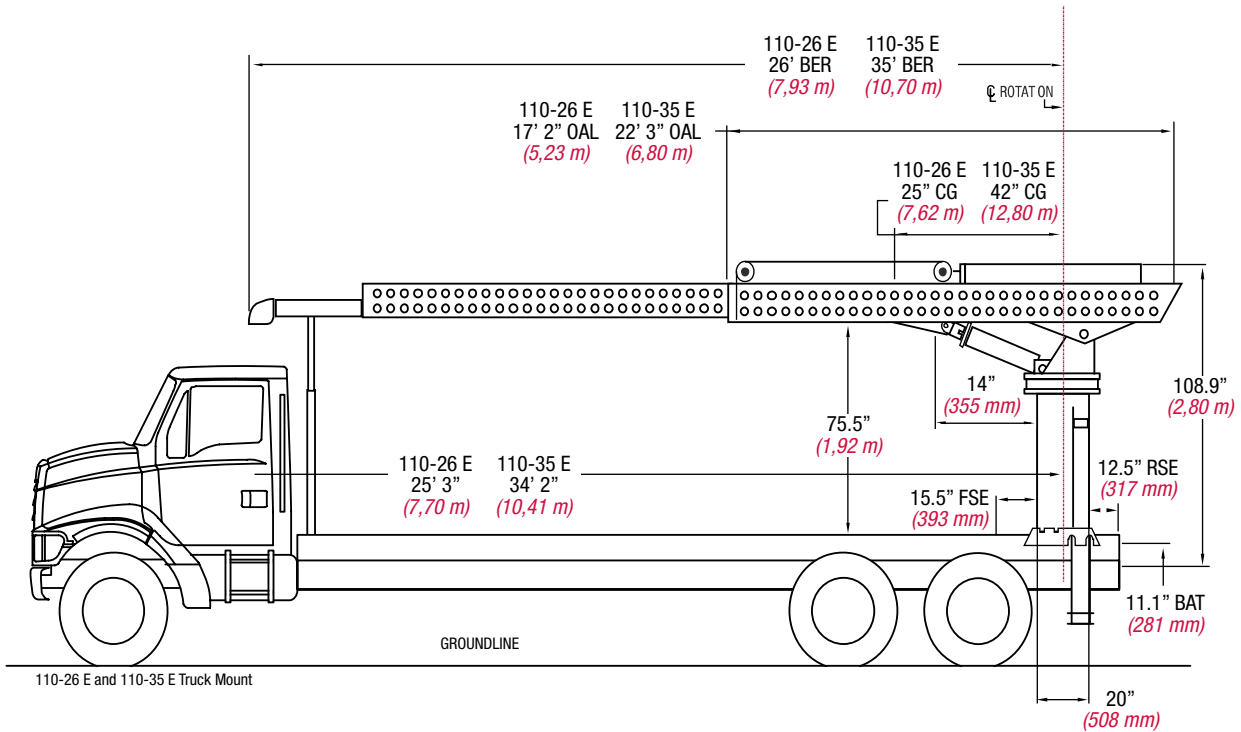
CHASSIS DATA	
Standard Specifications	PC-20 C
Maximum Lift Capacity at 11' (3,40 m)*	20,000 lb <i>(9 090 kg)</i>
Maximum Lift Capacity at 22' (6,71 m)*	10,000 lb <i>(4 545 kg)</i>
Cable Payout from Trolley	17' 6.5" <i>(5,40 m)</i>
Elevation	40°
Rotation	Continuous 1 rpm
Minimum Frame Required	3.2 rbm

WEIGHTS	
	PC-20 C
Basic Unit (classic includes outrigger)	10,800 lb <i>(4 898 kg)</i>

HYDRAULIC SYSTEM	
	PC-20 C
Pump Flow	12 gpm <i>(45 lpm)</i>
Recommended Truck Engine Speed	1,200 rpm
Operating Pressure	2,500 psi <i>(17,236 kPa)</i>

* Less Attachment Weight

model 110-26 E 110-35 E



CHASSIS DATA

Standard Specifications	110-26 E	110-35 E
Maximum Lift Capacity at 18' (5,50 m)*	11,000 lb <i>(4 989 kg)</i>	11,000 lb <i>(4 989 kg)</i>
Maximum Lift Capacity at 25' (7,62 m)*	6,500 lb <i>(2 948 kg)</i>	-
Maximum Lift Capacity at 35' (10,70 m)*	-	4,000 lb <i>(1 814 kg)</i>
Minimum Radius Retracted	11' 6" <i>(3,51 m)</i>	15' 1" <i>(4,60 m)</i>
Maximum Radius	43° <i>(1,09 m)</i>	43° <i>(1,09 m)</i>
Cable Payout from Trolley	19' <i>(5,80 m)</i>	20' <i>(6,10 m)</i>
Elevation	59°	59°
Rotation	Continuous 1 rpm	Continuous 1 rpm
Minimum Frame Required	2.5 rbm	2.5 rbm

* Less Attachment Weight

WEIGHTS

	110-26 E	110-35 E
Basic Unit (classic includes outrigger weight)	5,900 lb <i>(2 676 kg)</i>	6,700 lb <i>(3 039 kg)</i>
AS-6 A-Frame Outrigger	1,500 lb <i>(680 kg)</i>	1,500 lb <i>(680 kg)</i>
HS-6 Drop Down Outrigger	630 lb <i>(285 kg)</i>	630 lb <i>(285 kg)</i>
ER-20 Radial Out/Down Outrigger	1,370 lb <i>(621 kg)</i>	1,370 lb <i>(621 kg)</i>
AS-6 Extra-Wide A-Frame Outrigger	2,020 lb <i>(916 kg)</i>	2,020 lb <i>(916 kg)</i>

HYDRAULIC SYSTEM

	110-26 E	110-35 E
Pump Flow	24 gpm <i>(90 lpm)</i>	12 gpm <i>(45 lpm)</i>
Recommended Truck Engine Speed	1,200 rpm	1,200 rpm
Operating Pressure	2,400 psi <i>(16,547 kPa)</i>	2,400 psi <i>(16,547 kPa)</i>

OAH - Overall Height, BER - Boom Extension Radius, LC - Load Clearance, FSE - Front Stinger Extension, RSE - Rear Stinger Extension, BAT - Bed Assembly Thickness, CG - Center of Gravity from Center Line of Rotation

UPTime is the Manitex commitment to complete support of thousands of units working every day.

UPTime

- Includes 24-7-365 parts assistance.
- Utilizes the efficiency of the Manitex Online Parts Search & Order System.
- Relies on Manitex's UPTrak support tracking system for performance analysis and resource allocation.
- Features REMan, Manitex's cost effective rebuild/exchange program.
- Provides expert service technicians for troubleshooting and site visits.
- Mandates training; at our facility and yours. It includes coordinated support from all component suppliers.
- Involves every Manitex team member in the support of every Manitex customer.

What does UPTime mean to Manitex customers?

UPTime means reliability.

UPTime means utilization.

UPTime means profitability.



Manitex
3000 South Austin Avenue
Georgetown, TX, USA 78626
Telephone 512-942-3000
Facsimile 512-863-3776
www.manitex.com